

Figure 1
Okinawa, mainland Japan and planned soil and rock source sites outside Okinawa
(Created with Wikimedia Commons image)



Figure 2
Henoko and Oura Bay on Okinawa Island
(Created with Wikimedia Commons image)



Figure 3
Cape Henoko and Oura Bay
(© SDCC)

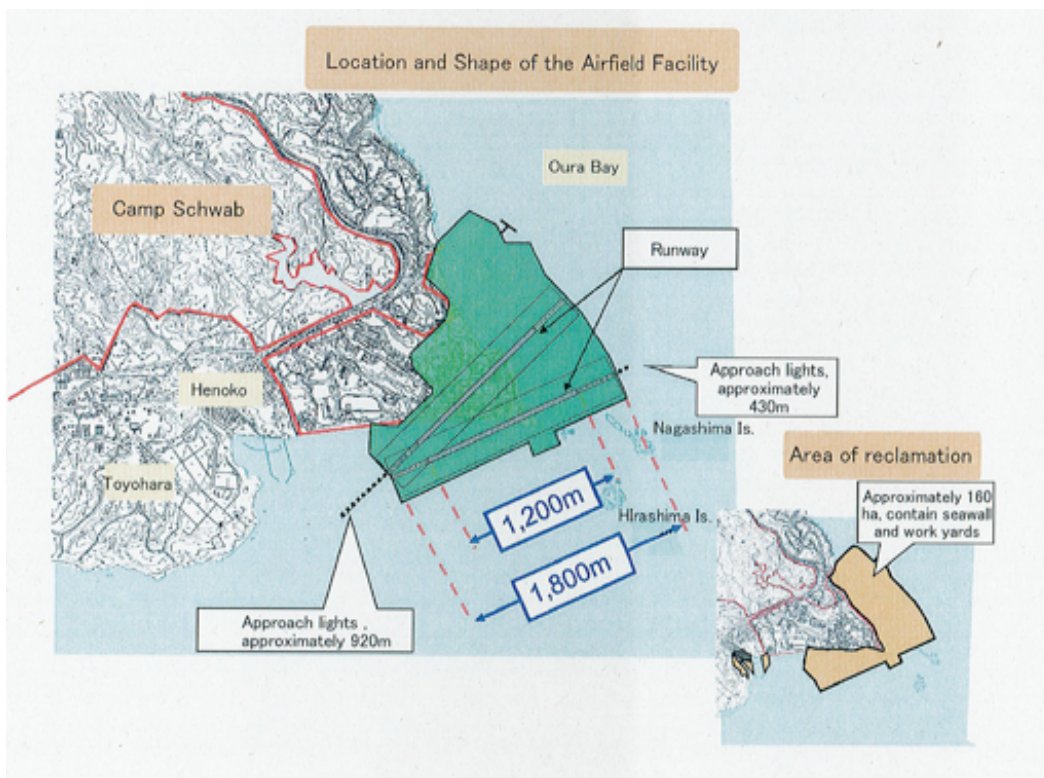


Figure 4
“Location and Shape of the Airfield Facility”
(from the Okinawa Defense Bureau’s Environment Impact Statement 2012)

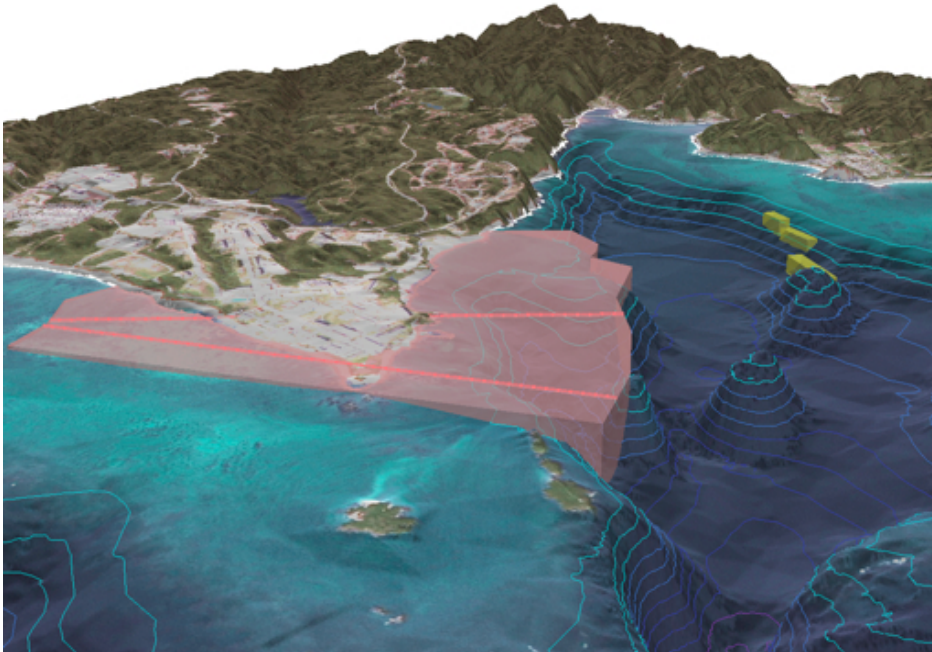


Figure 5

Three dimension image of the reclamation project

(Created by H. Hasegawa and T. Goto, © CNES 2004, distribution Spot Image, production NTT DATA)

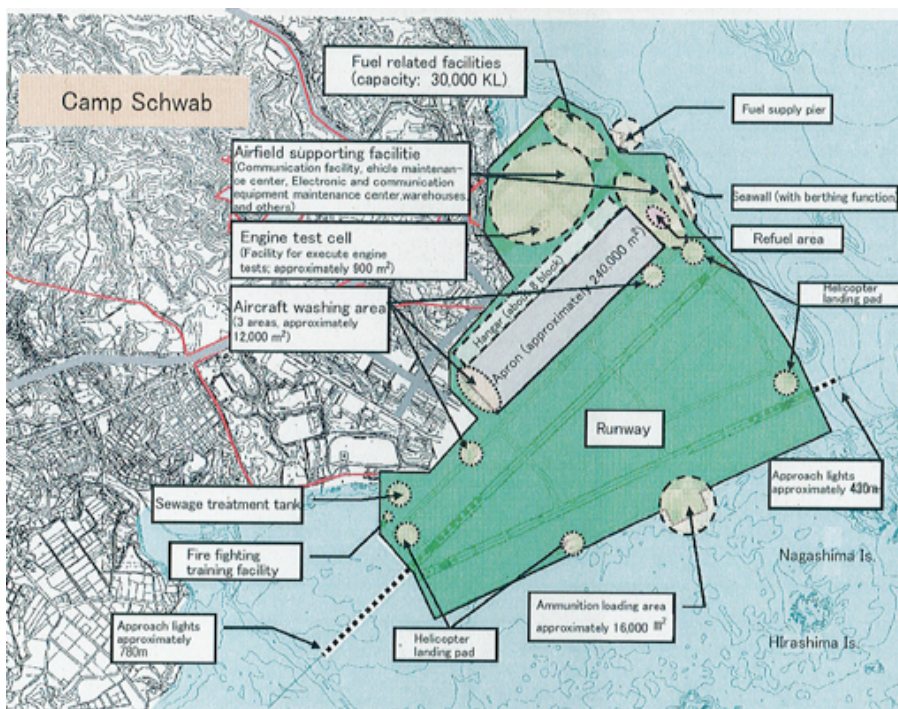


Figure 6

Details of the Airfield Facility

(from the Okinawa Defense Bureau's Environmental Impact Statement 2012)

Biodiversity in Henoko and Oura Bay



Blue coral (© O. Makishi)



Dugong and sea turtle (©T. Higashionna)



Sea grass bed (© O. Makishi)



Black-naped tern (© O. Makishi)



Mangrove (© Okinawa Outreach)



Henoko Annual boat race ritual
(©Okinawa Outreach)

Invasion information	
Range in Japan	Tokyo, Kanagawa, Shizuoka, Aichi, Gifu, Hyogo, Okayama, Hiroshima, Yamaguchi, and Tokushima Prefs.
Origin	Unknown.
Date	1993
Route	Accidental introduction (with building material, with some kind of transport, with some vector).
Impact	Pest for agriculture and human life. Native organism(s) affected: Insects.
Regulation in Japan	Import, transport and keeping in Japan are prohibited by the Invasive Alien Species Act.
Introduced range in other countries	Europe (France, Italy, Portugal, Spain, UK, Switzerland, etc.), Atlantic Islands (Azores, etc.), UAE, South Africa, Bermuda, USA (mainland, Hawaii), Mexico, Chile, Peru, Australia, New Zealand.

Table 1

Argentine Ant (*Linepithema humile*) in Japan

(from the National Institute for Environmental Studies' web site *Invasive Species of Japan*: <http://www.nies.go.jp/biodiversity/invasive/DB/detail/60090e.html>)



Figure 7

Range of the Argentine ant in Japan superimposed with planned soil and rock source sites for the reclamation project

(Created with images from the National Institute for Environmental Studies' web site *Invasive Species of Japan*:

<http://www.nies.go.jp/biodiversity/invasive/DB/detail/60090e.html>